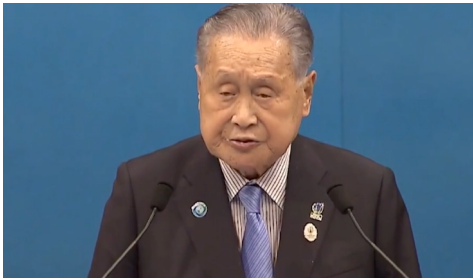


# The Fourth Asia Pacific Water Summit

Kumamoto. Japan, April 23-24, 2022



Yoshiro Mori, President of the APWF and former Prime Minister, Japan



Emperor and Empress of JAPAN



Antonio Guterres, UNSG



Fumio Kishida, Prime Minister, Japan

**17 Heads of State and Government**, including Presidents, Prime Ministers and Deputy Presidents, as well as **19 government ministers**, who attended either in person, virtually, or via video message.

## Kumamoto Declaration

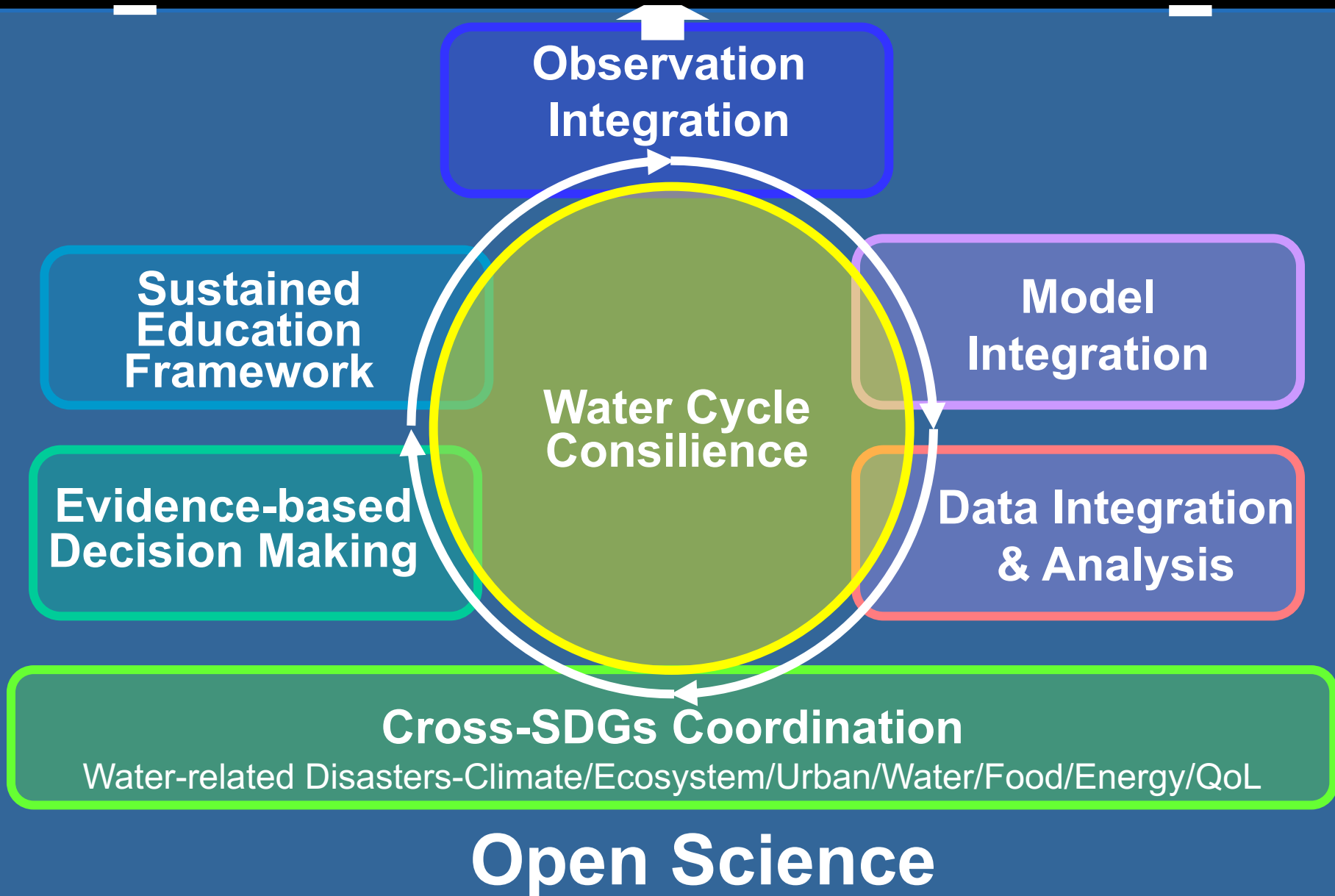
- Require transformation into **quality-oriented societies** that are **resilient**, **sustainable**, and **inclusive**.
- Improve **governance**, close the **financial** gap and appeal to the **science and technology** community.
- Explore what role science and technology should play in the **cross-sectoral decision-making of leaders**.

## Chair's Summary

- Promote water cycle **consilience** by accelerating the Open Science policy, particularly focusing on observation, modeling and data integration;

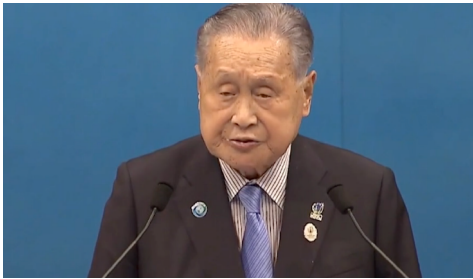
# Summary Report

## Integration Session 1: Science and Technology



# The Fourth Asia Pacific Water Summit

Kumamoto. Japan, April 23-24, 2022



Yoshiro Mori, President of the APWF and former Prime Minister, Japan



Emperor and Empress of JAPAN



Antonio Guterres, UNSG



Fumio Kishida, Prime Minister, Japan

**17 Heads of State and Government**, including Presidents, Prime Ministers and Deputy Presidents, as well as **19 government ministers**, who attended either in person, virtually, or via video message.

## Kumamoto Declaration

- Require transformation into **quality-oriented societies** that are **resilient**, **sustainable**, and **inclusive**.
- Improve **governance**, close the **financial** gap and appeal to the **science and technology** community.
- Explore what role science and technology should play in the **cross-sectoral decision-making of leaders**.

## Chair's Summary

- Promote water cycle **consilience** by accelerating the Open Science policy, particularly focusing on observation, modeling and data integration;
- Foster "**Facilitators**," that is, catalytic beings who can lead the way toward resolving problems by providing professional advice on-site using a broad range of scientific and indigenous knowledge;

## Society On-site Stakeholders

Filling Gap

User needs and local  
data and knowledge

Fresh learning by  
integrated scientific  
knowledge

Socio-economic survey data  
and statistics with large variety  
and strict confidentiality.

Observation,  
monitoring and  
prediction data with  
large volume & high  
throughput.

- trust-based relationship
- causes and structure of on-site problem
- local implications of data and information
- goals, possible solutions, and governance
- on-site stakeholders' responsibilities
- convincing

### Facilitator

not just as  
"a master of ceremony"  
but as  
"catalytic beings"

New  
perspective

Science  
Community

Maximum  
Use

Online Synthesis  
System for  
Sustainability and  
Resilience  
(OSS-SR)

Supporting consilience  
by providing information

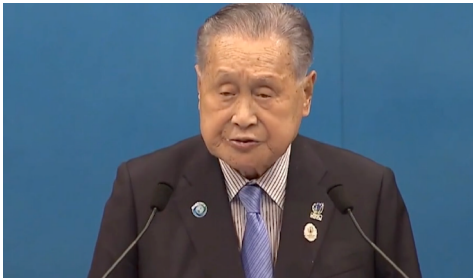
Proposing a new framework

### Functions

- Exploration, collection, archive and search of scientific information in mother tongues
- Prediction and simulation, and visualization
- Data integration, information fusion
- Coordination of various disciplines
- **Mutual risk communication between society and science community**

# The Fourth Asia Pacific Water Summit

Kumamoto. Japan, April 23-24, 2022



Yoshiro Mori, President of the APWF and former Prime Minister, Japan



Emperor and Empress of JAPAN



Antonio Guterres, UNSG



Fumio Kishida, Prime Minister, Japan

**17 Heads of State and Government**, including Presidents, Prime Ministers and Deputy Presidents, as well as **19 government ministers**, who attended either in person, virtually, or via video message.

## Kumamoto Declaration

- Require transformation into **quality-oriented societies** that are **resilient**, **sustainable**, and **inclusive**.
- Improve **governance**, close the **financial** gap and appeal to the **science and technology** community.
- Explore what role science and technology should play in the **cross-sectoral decision-making of leaders**.

## Chair's Summary

- Promote water cycle **consilience** by accelerating the Open Science policy, particularly focusing on observation, modeling and data integration;
- Foster "**Facilitators**," that is, catalytic beings who can lead the way toward resolving problems by providing professional advice on-site using a broad range of scientific and indigenous knowledge;
- Work together beyond disciplines and sectors among different levels while taking an **end-to-end approach**.

# End to End Approach on Climate Change Adaptation

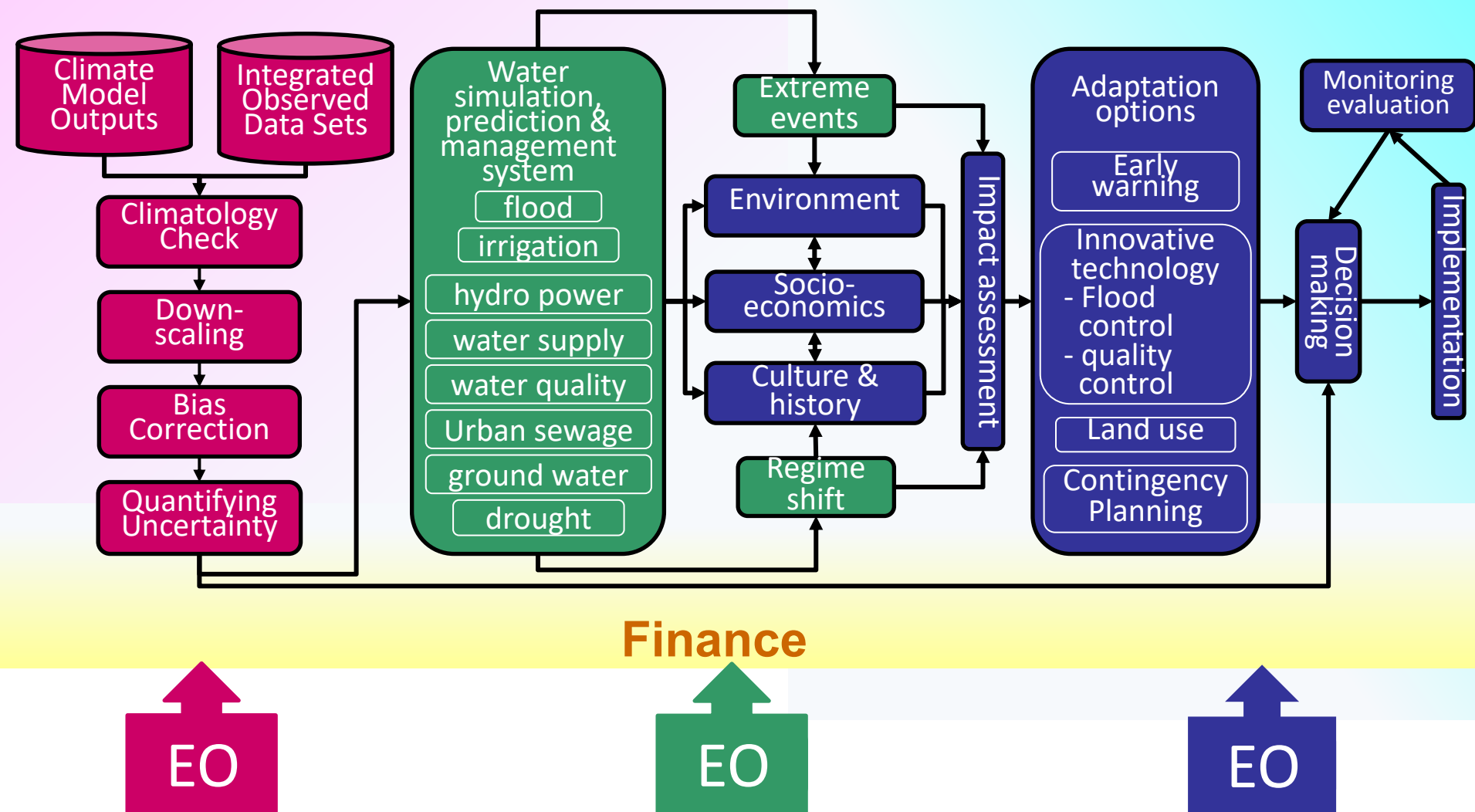
## Science & Technology

## Governance

### Scientific Approach

### Engineering Approach

### Socio-economical Approach







Yoshiro Mori, President of the APWF and former Prime Minister, Japan



Emperor and Empress of JAPAN



Antonio Guterres, UNSG



Fumio Kishida, Prime Minister, Japan

**17 Heads of State and Government**, including Presidents, Prime Ministers and Deputy Presidents, as well as **19 government ministers**, who attended either in person, virtually, or via video message.

## Kumamoto Declaration

- Require transformation into **quality-oriented societies** that are **resilient**, **sustainable**, and **inclusive**.
- Improve **governance**, close the **financial** gap and appeal to the **science and technology** community.
- Explore what role science and technology should play in the **cross-sectoral decision-making of leaders**.

## Chair's Summary

- Promote water cycle **consilience** by accelerating the Open Science policy, particularly focusing on observation, modeling and data integration;
- Foster "**Facilitators**," that is, catalytic beings who can lead the way toward resolving problems by providing professional advice on-site using a broad range of scientific and indigenous knowledge;
- Work together beyond disciplines and sectors among different levels while taking an **end-to-end approach**.